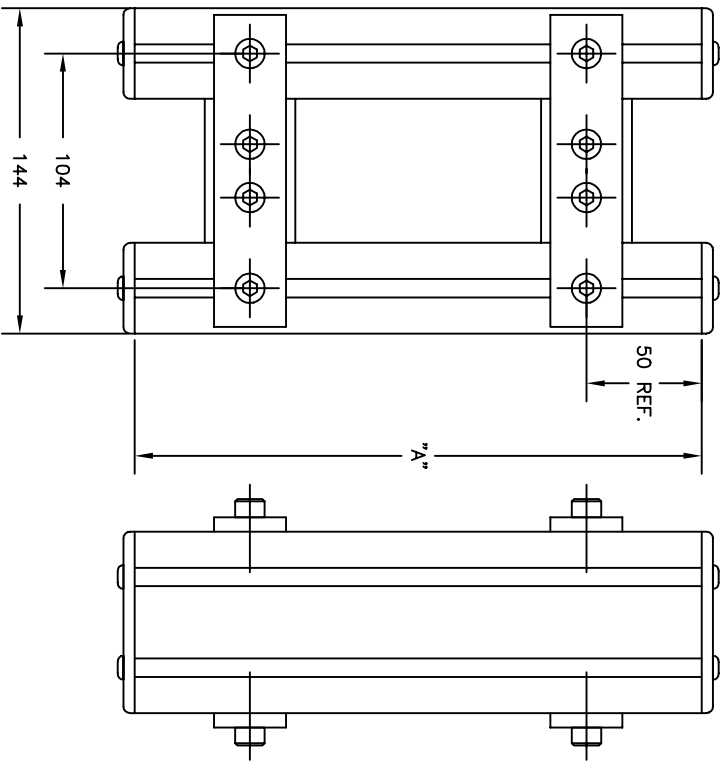


# METRIC ACCESSORIES

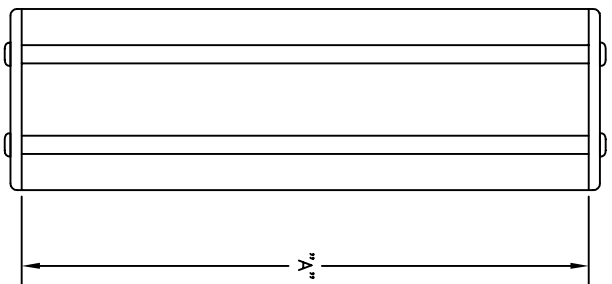
<u>MODEL #</u>	<u>SHEET #</u>	<u>DESCRIPTION</u>
5012	A-1	SPREADER BAR (SINGLE 4080)
5013	A-1	SPREADER BAR (SINGLE 8080)
5014	A-1	SPREADER BAR (DUAL 4080)
5266	A-2	METRIC 3060 U.H.M.W. SIDE GUIDES
5268	A-2	METRIC 3060 SPREADER BAR
5015	A-3	U.H.M.W. SIDE GUIDE
5016	A-3	STEEL SIDE GUIDE
5005	A-4	PIVOT BRACKET
5040	A-4	PIVOT MOUNT FOR MINI CONVEYORS
5231	A-4	METRIC HEAVY-DUTY PIVOT MOUNT
5019	A-5	PIVOTING END STOP
5226	A-5	HORIZONTAL PIVOT END STOP
5234	A-6	METRIC VERTICAL END STOP
5020	A-7	RUB RAIL CLAMP
--	A-7	FASTENERS FOR METRIC SERIES PRODUCTS
5207	A-7	SHAFT MOUNTING BLOCKS
5208	A-7	SHAFT MOUNTING BLOCKS
5017	A-8	CONVEYOR TO CONVEYOR BRIDGE
5018-1	A-8	FIXED END STOP

<u>MODEL #</u>	<u>SHEET #</u>	<u>DESCRIPTION</u>
5249	A-9	SLIDING CROSS SHAFT FOR U-JOINT CONVEYORS ~ STD. LENGTH
5251	A-9	SLIDING CROSS SHAFT FOR U-JOINT CONVEYORS ~ SHORT STYLE
5310	A-10	METRIC LEVELING FEET
5311	A-10	METRIC LEVELING FEET
--	A-17	URETHANE BELT SHEET
5322	A-11	METRIC BELT TAKE-UP
--	A-12	FLAT BELT ORDERING INFORMATION
--	A-12	FLAT BELT LACE SHEET

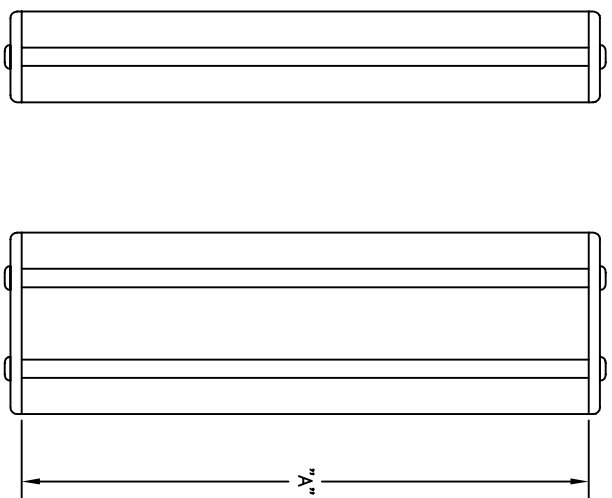
LAST PLOT DATE: 03/02/07



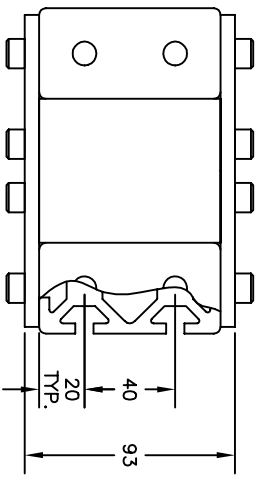
5014



5013

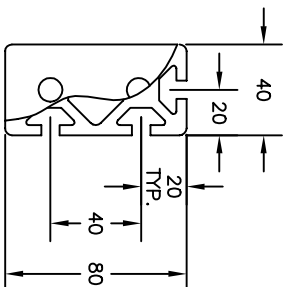
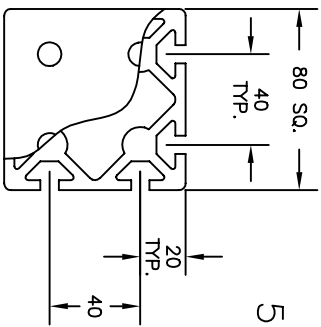


5012

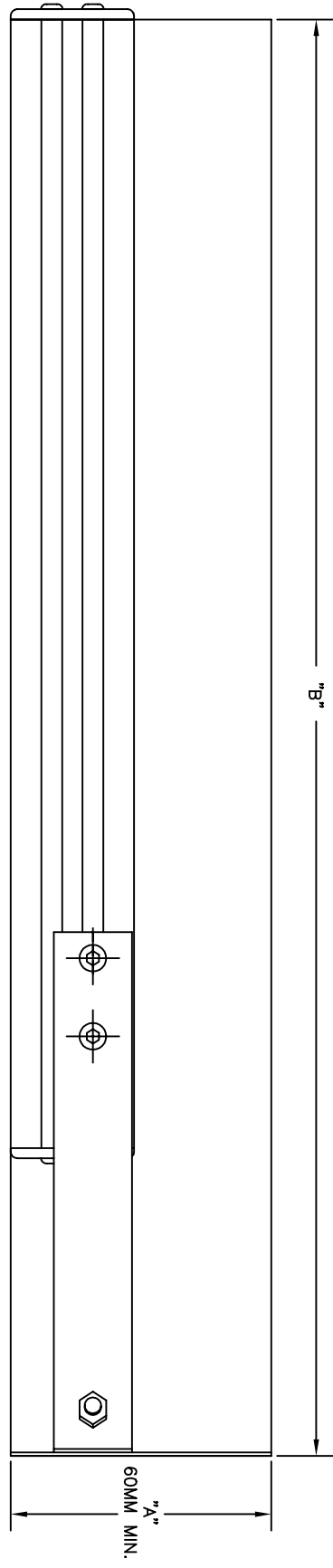
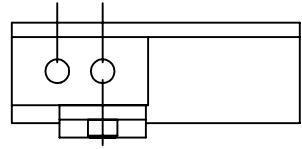
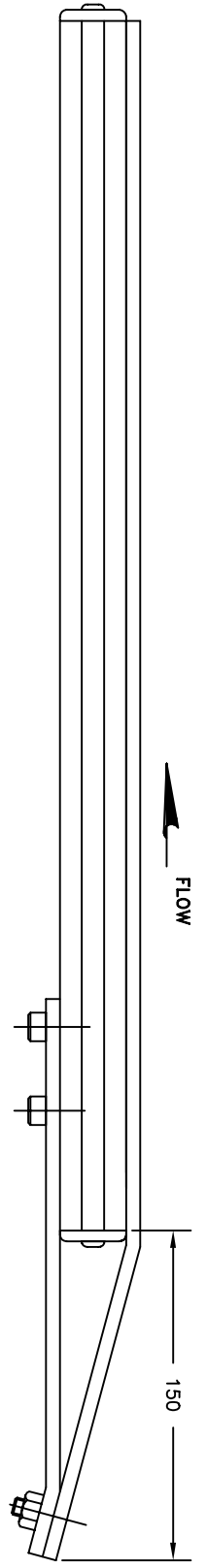


HOW TO ORDER DIAMOND AUTOMATION  
METRIC SPREADER BAR

MODEL NO.	5012 - 250
5012	
5013	
5014	
"A" MM	



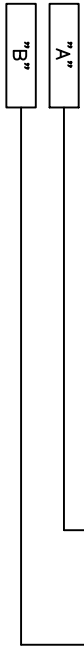
TITLE  
METRIC SPREADER BARS



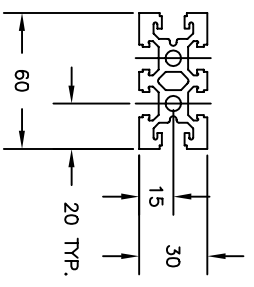
HOW TO ORDER DIAMOND AUTOMATION  
METRIC U.H.M.W. SIDE GUIDE ASSEMBLY

EXAMPLE: 5266 - L.H. - 127 - 700

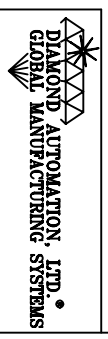
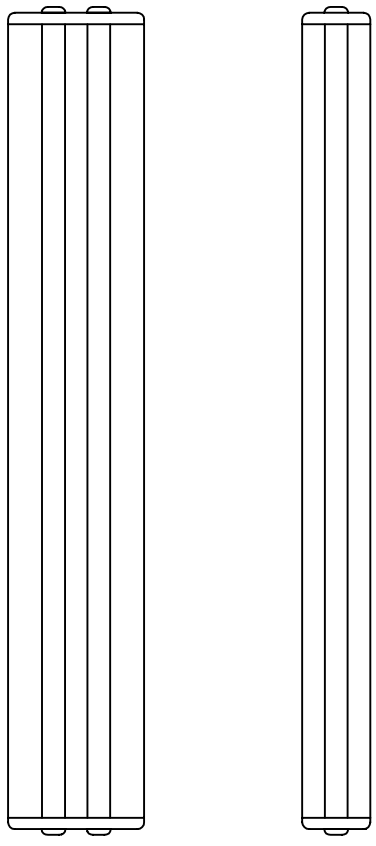
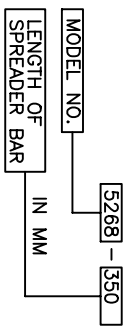
MODEL NUMBER	R.H. & L.H.
CONVEYOR SIDE	R.H.
LOOKING IN	L.H.
DIRECTION OF FLOW	



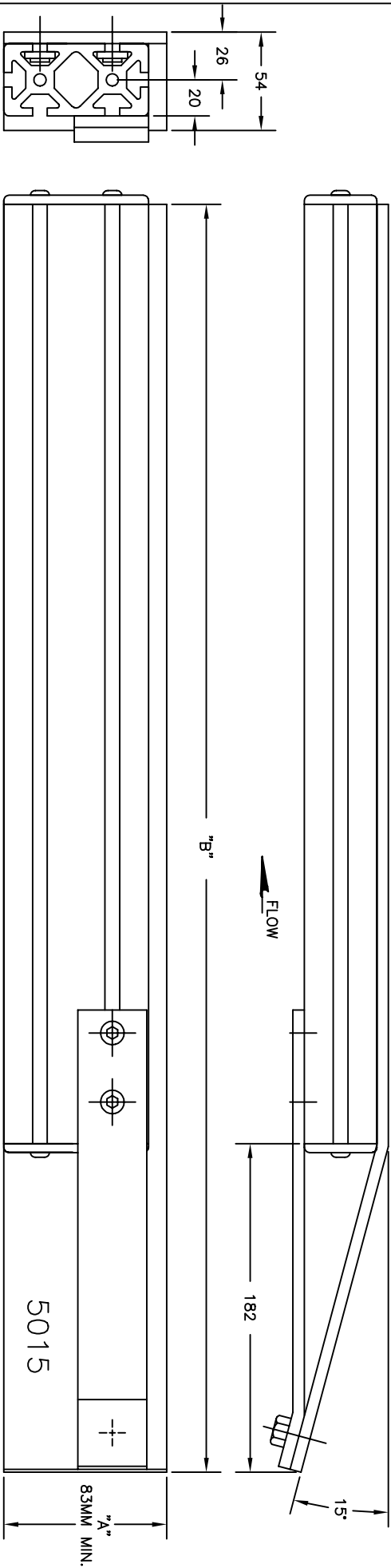
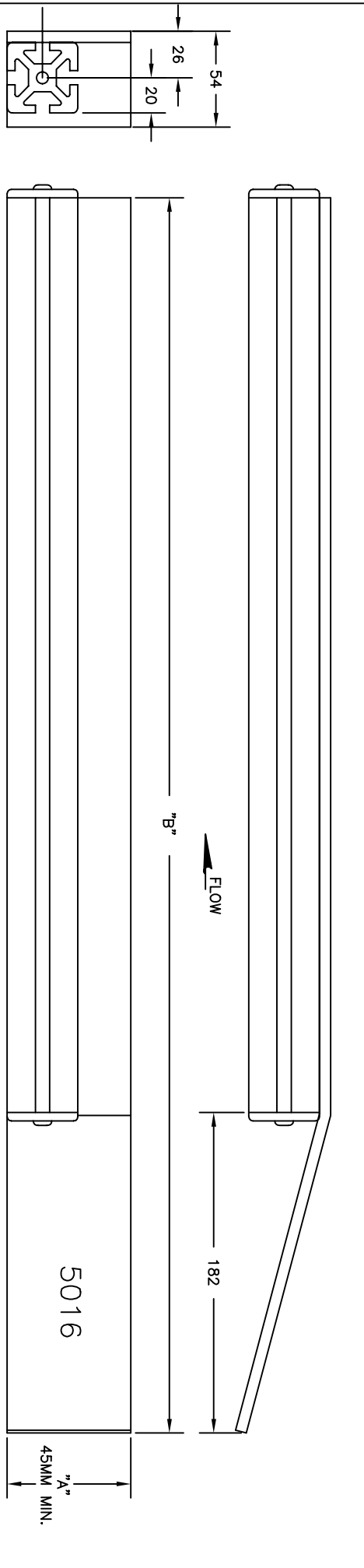
NOTE: LEFT HAND SHOWN  
RIGHT HAND IS SYMM. OPP.



HOW TO ORDER DIAMOND AUTOMATION  
METRIC SPREADER BAR



DIAMOND AUTOMATION, LTD.  
GLOBAL MANUFACTURING SYSTEMS  
METRIC U.H.M.W. 3060 SIDE  
GUIDE & SPREADER BAR



HOW TO ORDER DIAMOND AUTOMATION  
METRIC SIDE GUIDE

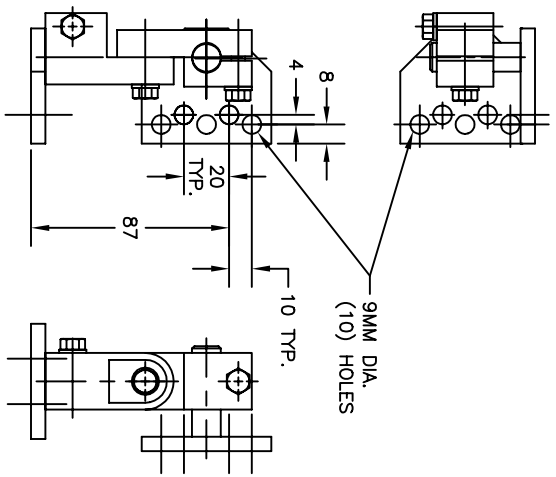
EXAMPLE: 5015 - L.H. - 90 - 700

MODEL NUMBER	5015	5016
CONVEYOR SIDE	L.H. & R.H.	L.H.
LOOKING IN	(SHOWN)	(SHOWN)
DIRECTION OF FLOW	R.H.	R.H.

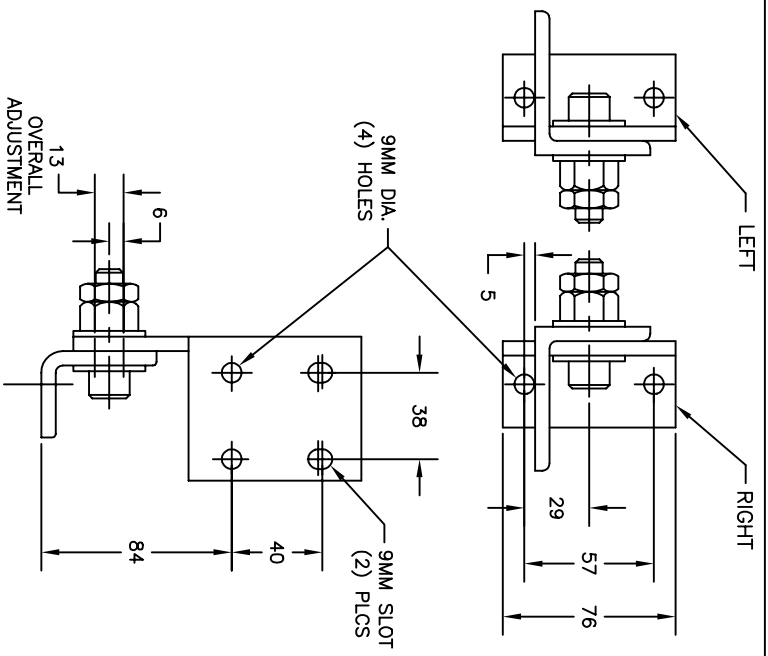
NOTE: L.H. SHOWN  
R.H. IS SYMM. OPP.



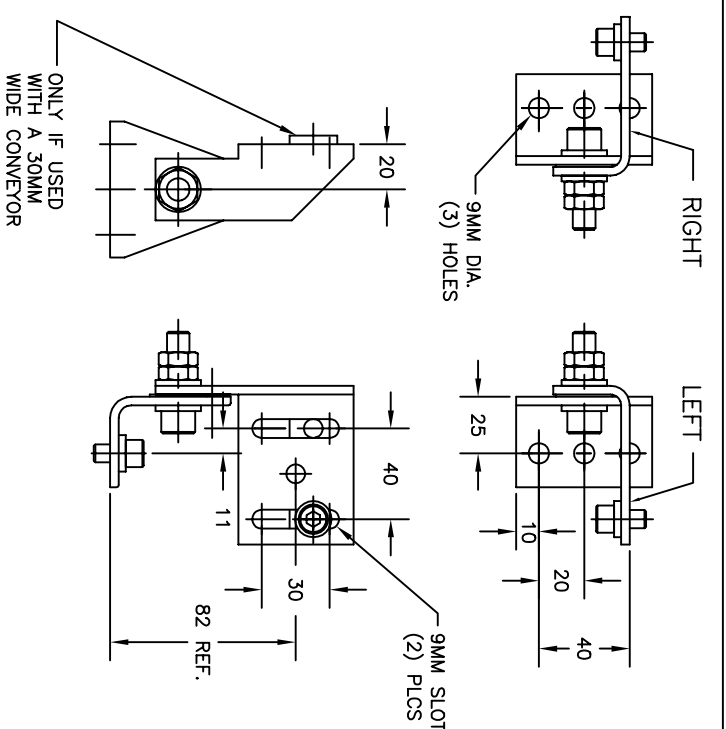
TITLE  
METRIC SIDE GUIDES



EXAMPLE: 5040  
MODEL NO.



EXAMPLE: 5231 - L  
MODEL NO.  
L-LEFT HAND  
R-RIGHT HAND

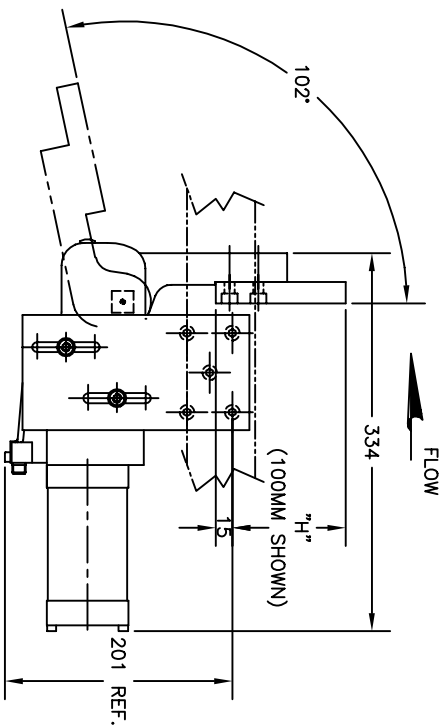
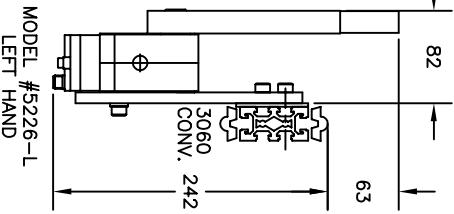
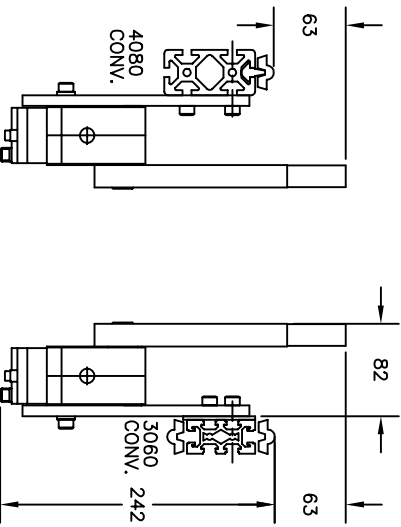
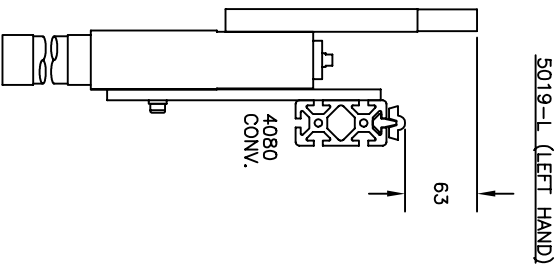
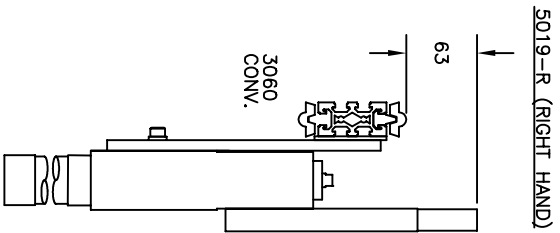
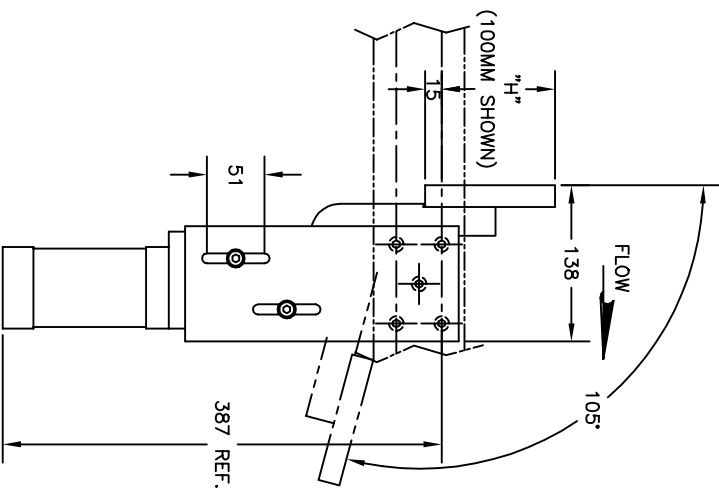


EXAMPLE: 5005 - L - -  
MODEL NO.  
L-LEFT HAND  
R-RIGHT HAND  
CONVEYOR WIDTH  
30MM S  
>30MM -

TECHNICAL DATA:  
TO FACILITATE BELT CHANGE  
MOUNTING BRACKETS SHOULD BOLT  
TO MOTOR SIDE OF CONVEYOR

**DIAMOND AUTOMATION, LTD.**  
GLOBAL MANUFACTURING SYSTEMS

TITLE: METRIC PIVOT BRACKET



HOW TO ORDER DIAMOND AUTOMATION  
METRIC PIVOTING END STOP

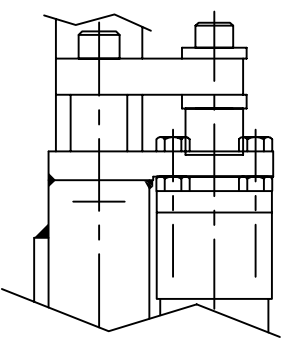
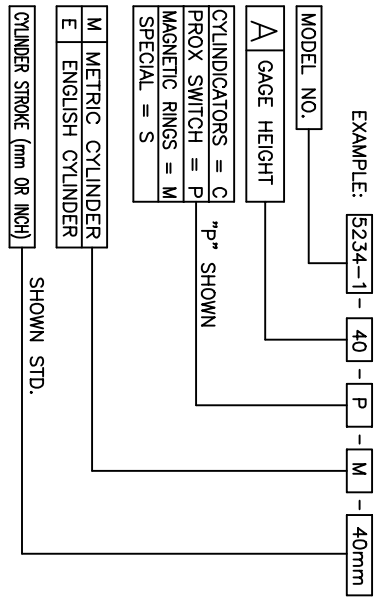
EXAMPLE: [5019L] - [100] - [UHMW]

MODEL NUMBER	5019L	5019R
STOP MATERIAL	5226L	5226R
"H" <sup>m</sup> - HEIGHT OF STOP		
UHMW - UNLESS OTHERWISE SPECIFIED		

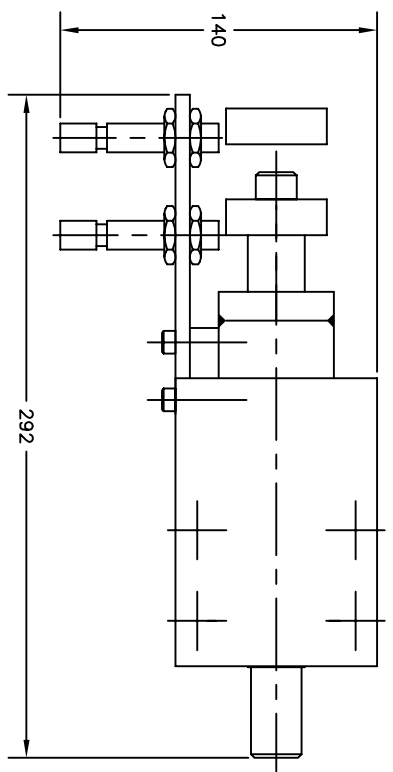
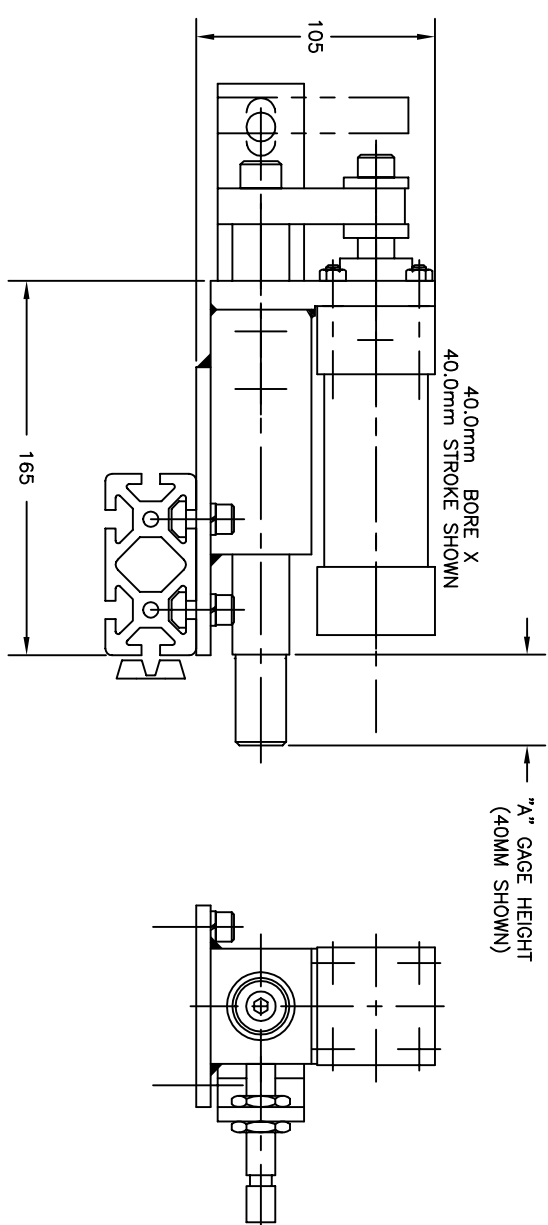



TITLE  
METRIC PIVOTING END STOP

HOW TO ORDER DIAMOND AUTOMATION  
VERTICAL END STOP ASSEMBLY



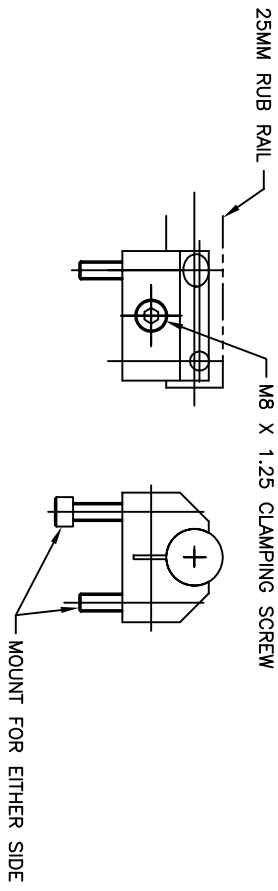
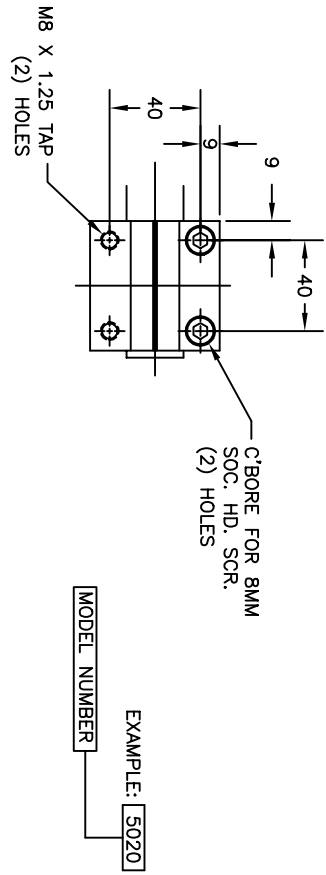
ENGLISH CYLINDER OPTION




**DIAMOND AUTOMATION, LTD.**  
 GLOBAL MANUFACTURING SYSTEMS

TITLE  
METRIC VERTICAL END STOP ASSEMBLY

SHEET: A06  
LAST PRINT DATE: 03/02/07



STANDARD STYLE T-NUT

PART NO.	THREAD
1222-40-3866	M6 X 1.0
1222-40-3868	M8 X 1.25
1222-40-3202	1/4 - 20
1222-40-3203	5/16 - 18

MINI CONVEYOR

1222-BHU-3008	M8 X 1.25
---------------	-----------

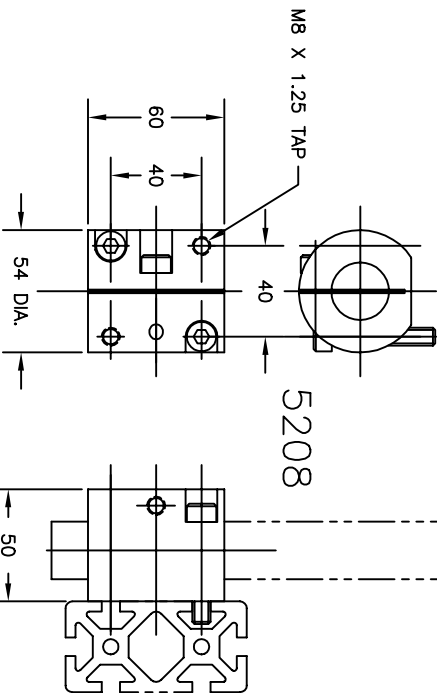
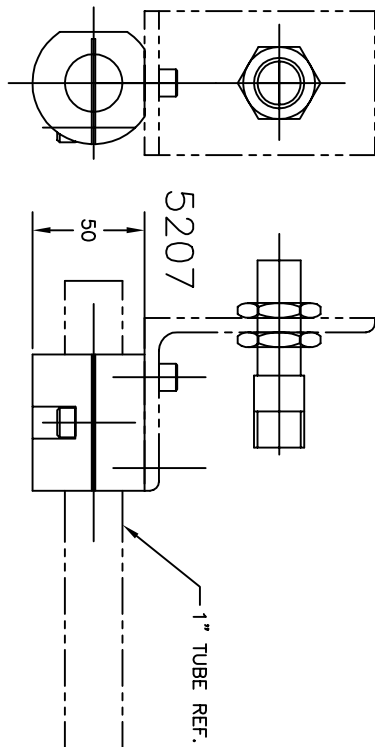
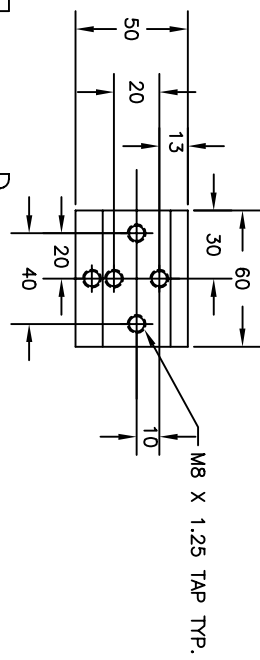
DROP IN STYLE T-NUT

PART NO.	THREAD
1222-40-3843	M6 X 1.0
1222-40-3842	M8 X 1.25
1222-40-3783	1/4 - 20
1222-40-3282	5/16 - 18

MINI CONVEYOR

1222-BHA-3008	M8 X 1.25
---------------	-----------

ALL T-NUTS SOLD IN LOTS OF TEN.



HOW TO ORDER DIAMOND AUTOMATION TUBE CLAMP

MODEL NO.

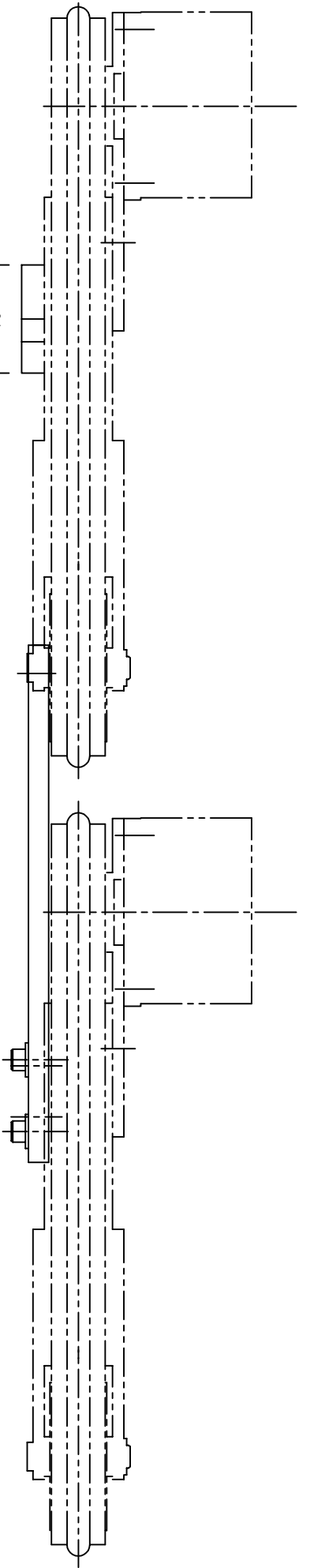
5207   5208
-------------

5208



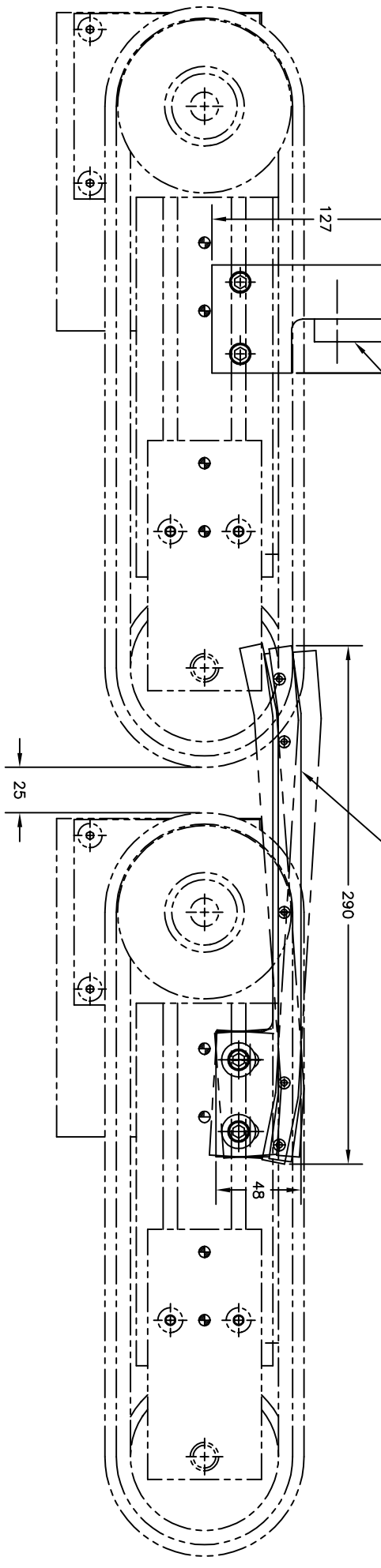
METRIC TUBE CLAMP OPTIONS





MODEL #5018-1  
METRIC FIXED END STOP

MODEL #5017  
METRIC CONVEYOR TO CONVEYOR BRIDGE



HOW TO ORDER DIAMOND AUTOMATION  
METRIC FIXED END STOP

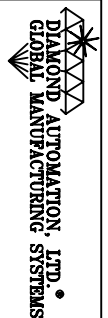
EXAMPLE: 5018-1

MODEL NUMBER

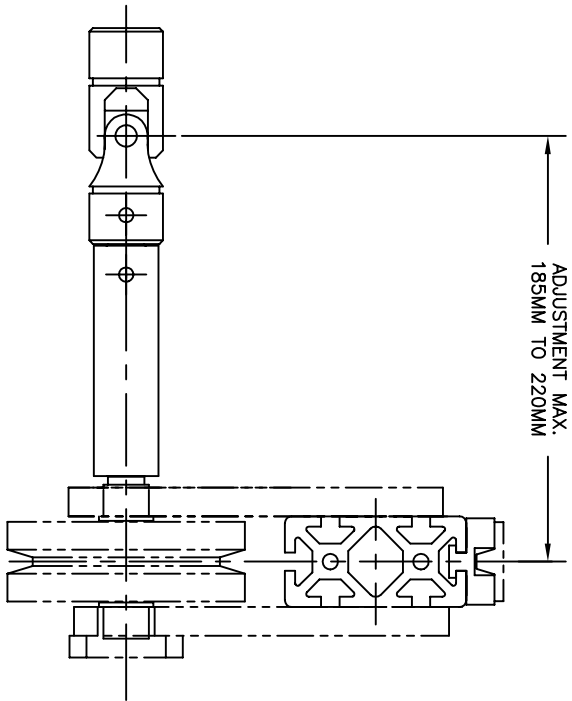
HOW TO ORDER DIAMOND AUTOMATION  
METRIC CONVEYOR TO CONVEYOR BRIDGE

EXAMPLE: 5017

MODEL NUMBER



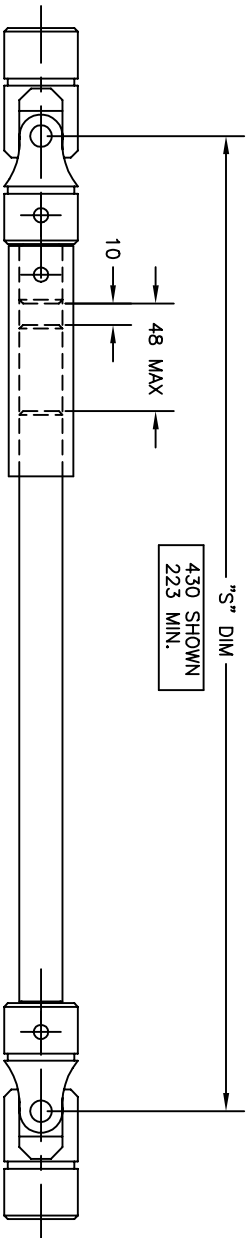
MODEL #5017  
METRIC CONVEYOR TO CONVEYOR BRIDGE



HOW TO ORDER DIAMOND AUTOMATION  
SHORT SLIDING CROSS SHAFT ASSEMBLY

EXAMPLE: 5251

MODEL NO.



HOW TO ORDER DIAMOND AUTOMATION  
SLIDING CROSS SHAFT ASSEMBLY

EXAMPLE: 5249 - 430

MODEL NO.

"S" - DIMENSION  
223 MIN.

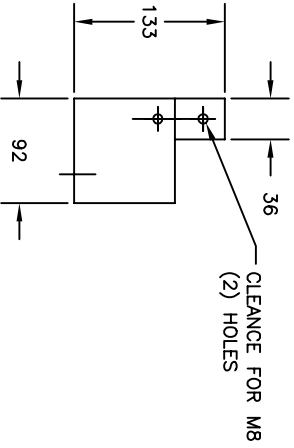
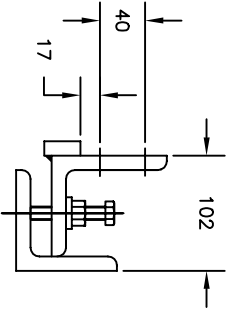
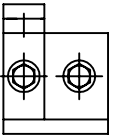


DIAMOND AUTOMATION, LTD.  
GLOBAL MANUFACTURING SYSTEMS

TITLE

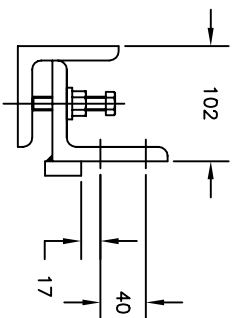
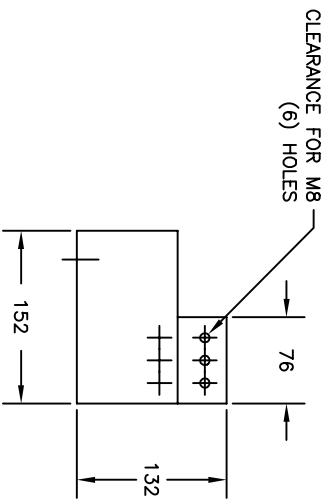
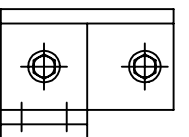
SLIDING CROSS SHAFT

NOTE: CAN BE USED WITH  
3060 EXTRUSION



MODEL #5310

NOTE: CAN BE USED WITH  
3060, 4080, & 8080 EXTRUSION



MODEL #5311

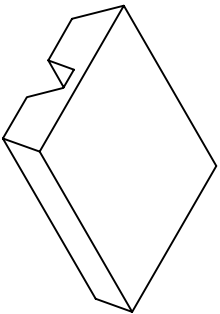
HOW TO ORDER DIAMOND AUTOMATION  
METRIC LEVELING FEET

EXAMPLE: [5310]

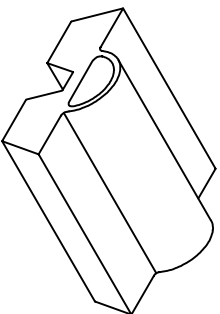
MODEL NUMBER	MODEL NUMBER
5310	5311



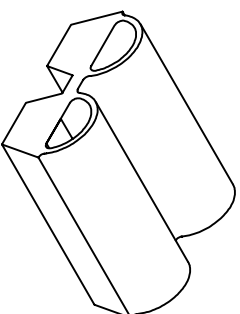
TITLE  
METRIC LEVELING FEET



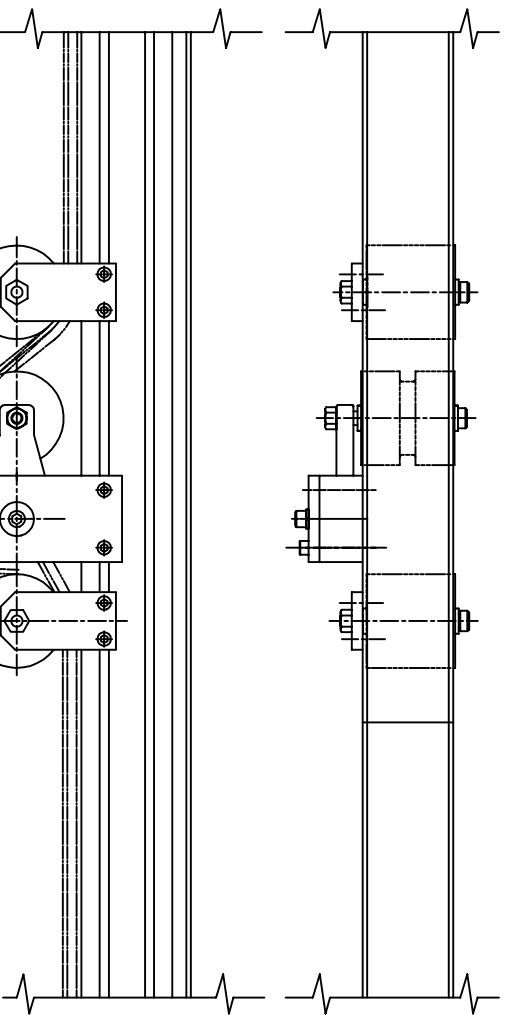
MODEL #1220 URETHANE FLAT BELT  
2X SCALE



MODEL #1229 URETHANE  
SINGLE BUBBLE BELT  
2X SCALE



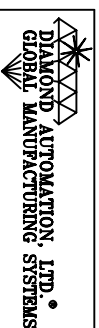
MODEL #7243 URETHANE  
DOUBLE BUBBLE BELT  
2X SCALE



HOW TO ORDER DIAMOND AUTOMATION  
METRIC TAKE-UP

EXAMPLE: 5322 - 2310

MODEL NUMBER	
BELTING MODEL #	
SEE SHIT A12 FOR FLAT BELTS	



TITLE TAKE-UP FOR BELTS

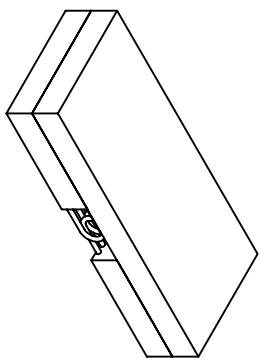
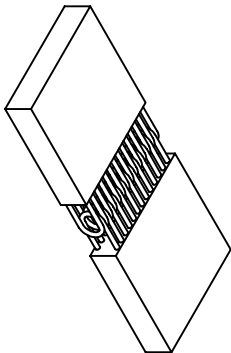
# HOW TO ORDER DIAMOND AUTOMATION

## METRIC FLAT BELT

### BELTING STYLE

- 1 - FUZZY TOP (LIGHT DUTY APPLICATION)
- 2 - BLACK ROUGH TOP (STANDARD DUTY APPLICATION)
- 3 - WHITE BUTYL (HIGH TEMPERATURE APPLICATION)
- 4 - GREEN BELT (CUT RESISTANT)
- 5 - RED URETHANE (IMPACT RESISANT)
- 6 - TWISTLOK (6100 OR 6200 ONLY)
- 7 - RED ROUGH TOP (HEAVY DUTY APPLICATION)
- 8 - BLUE ROUGH TOP (MEDIUM DUTY APPLICATION)

-	1	1	1	1	0
---	---	---	---	---	---

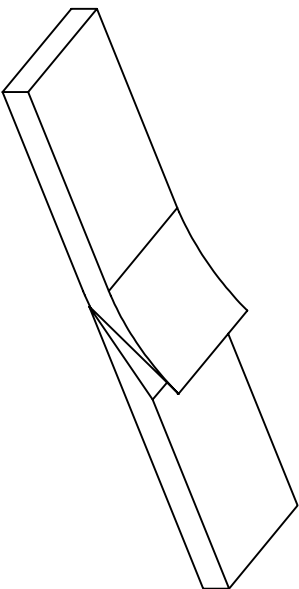


1) STEEL LACE

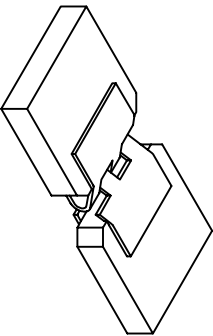
2) HIDDEN STEEL LACE

### BELT WIDTH

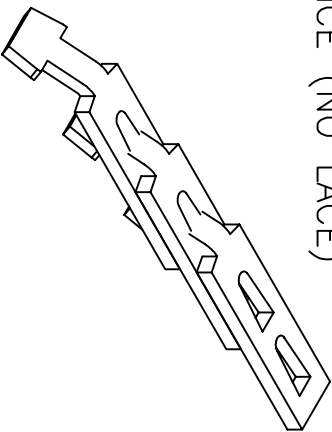
- 1 - (30mm CONVEYOR) 25mm (1")
- 2 - (40mm CONVEYOR) 32mm (1 1/4")
- 3 - (80mm CONVEYOR) 73mm (2 7/8")
- 4 - (160mm CONVEYOR) 149mm (5 7/8")
- 5 - UP TO 1525mm (60")



3) ENDLESS SPLICE (NO LACE)



4) STEEL STAPLE LACE



0) TWISTLOK

### TYPE OF LACE

- 0 - FOR BELT STYLE (6) TWISTLOK ONLY
- 1 - STEEL LACE
- 2 - HIDDEN STEEL LACE
- 3 - ENDLESS SPLICE (NO LACE)
- 4 - STEEL STAPLE LACE

NOTE: 1120 & 1220 ARE NOT AVAILABLE



TTM  
FLAT BELT ORDERING INFORMATION