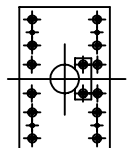
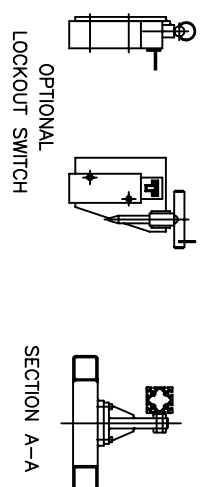
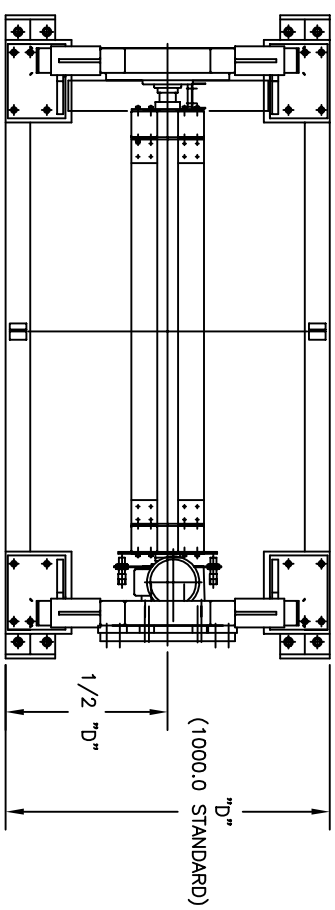


## METRIC ROTATE UNITS

<u>MODEL #</u>	<u>SHEET #</u>	<u>DESCRIPTION</u>
5058 :	R-1 :	HEAVY-DUTY ROTATE WITH ELECTRIC MOTOR
5210 :	R-2 :	180° ROLLOVER WITH ELECTRIC MOTER
5038 :	R-3 :	ROTATE WITH BRAKE ASSEMBLY
5039 :	R-4 :	ROTATE WITH BRAKE ASSEMBLY & SHOCK PACKAGE
5237 :	R-5 :	180° ROLLOVER W/ STEEL FRAME



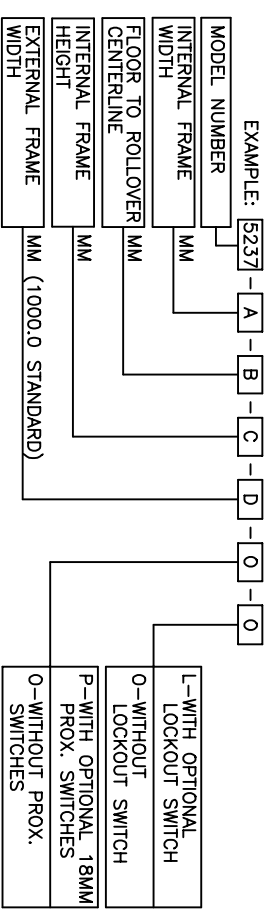
VIEW-X  
2X SCALE



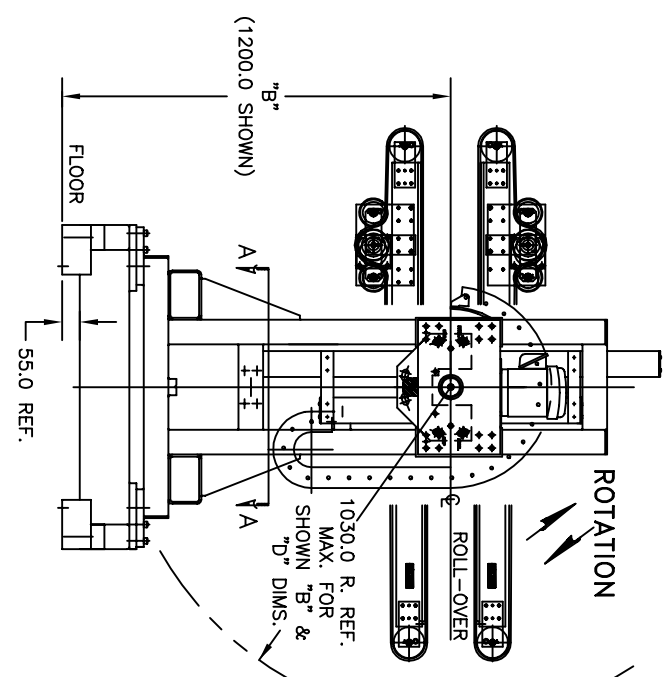
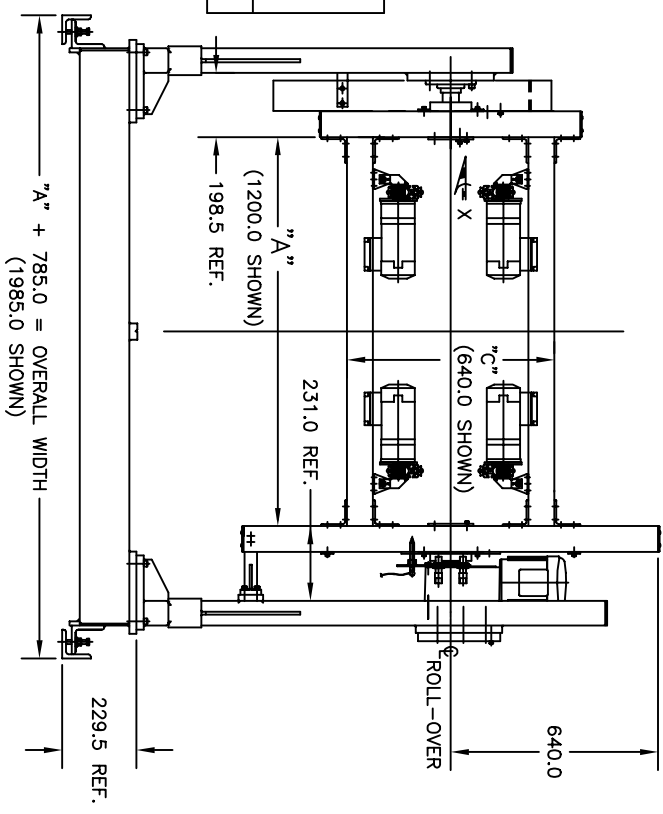
NOTE:  
CONVEYORS, SIDE GUIDES, & STOPS  
ORDERED SEPARATELY.

TECHNICAL DATA:  
TWO MOUNTS ARE REQUIRED  
FOR EACH CONVEYOR.  
MAXIMUM UNSUPPORTED LENGTH = 1M  
MAX LOAD = 50 LBS. PER CONVEYOR.  
WT. OF ROTATING UNIT = 264 LBS.(APPROX.)  
NOTE: MAX. R. IS DEPENDENT UPON "B"  
& "D" DIMS.

HOW TO ORDER DIAMOND AUTOMATION  
ELECTRIC ROLLER



- L-WITH OPTIONAL LOCKOUT SWITCH
- O-WITHOUT LOCKOUT SWITCH
- P-WITH OPTIONAL, 18MM PROX. SWITCHES
- O-WITHOUT PROX. SWITCHES

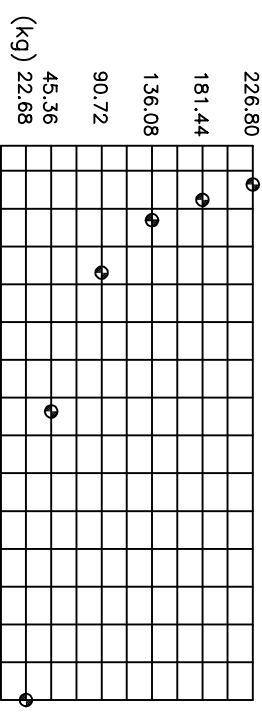


5096 1/2 CANAL ROAD  
P.O. BOX 37  
DIMONDALE MICHIGAN 48821  
PHONE (517) 646-9637  
FAX (517) 646-8115  
WWW.DIAMONTS.COM  
E-MAIL: INFO@DIAMONTS.COM



TYPE METRIC 180° ROLLER  
WITH STEEL FRAME MODEL #5237  
DRAWN BY M/S [DATE] 08/15/02 SHEET R-5

WEIGHT OF PART AND EQUIPMENT

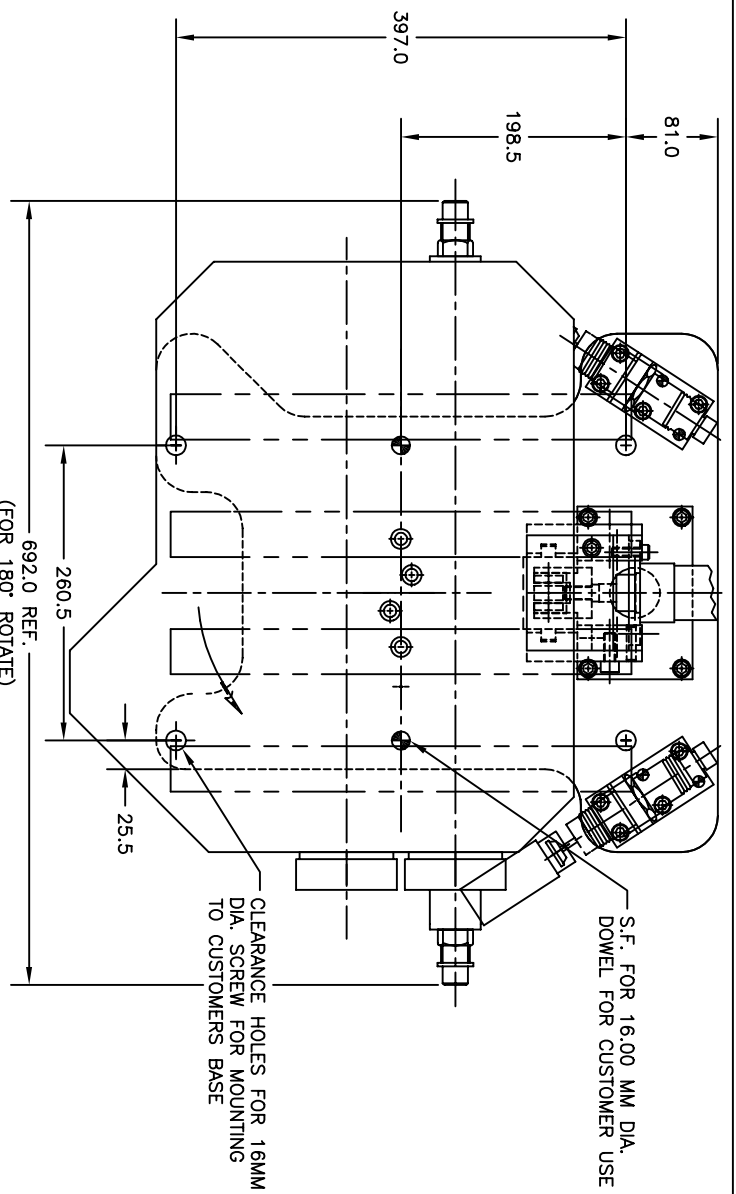
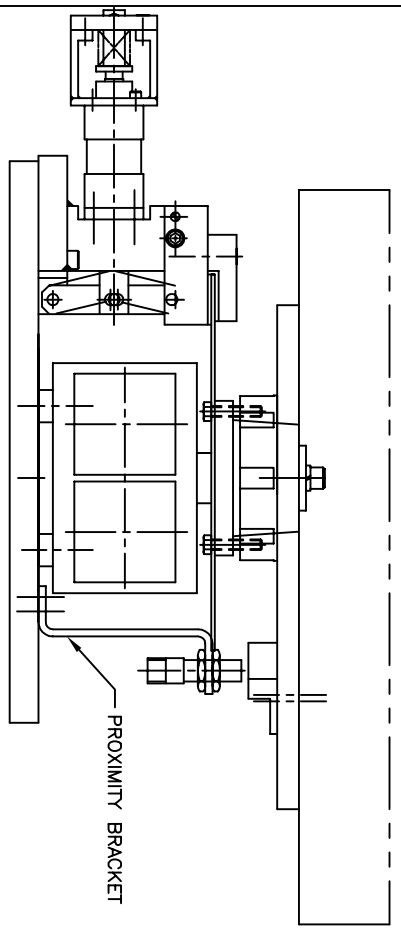


MAX. DISTANCE FROM  $C$  OF SHAFT TO CENTER OF MASS OF PART AND EQUIPMENT  
 MAX. AXIAL LOAD = 226.80 kg

HOW TO ORDER DIAMOND AUTOMATION METRIC ROTATE WITH BRAKE AND SHOCK PACKAGE

EXAMPLE: [5039] - [D]  
 MODEL NO.

USE OF MID-DRIVE CONVEYORS IS RECOMMENDED  
 PHD ACTUATOR IS STANDARD



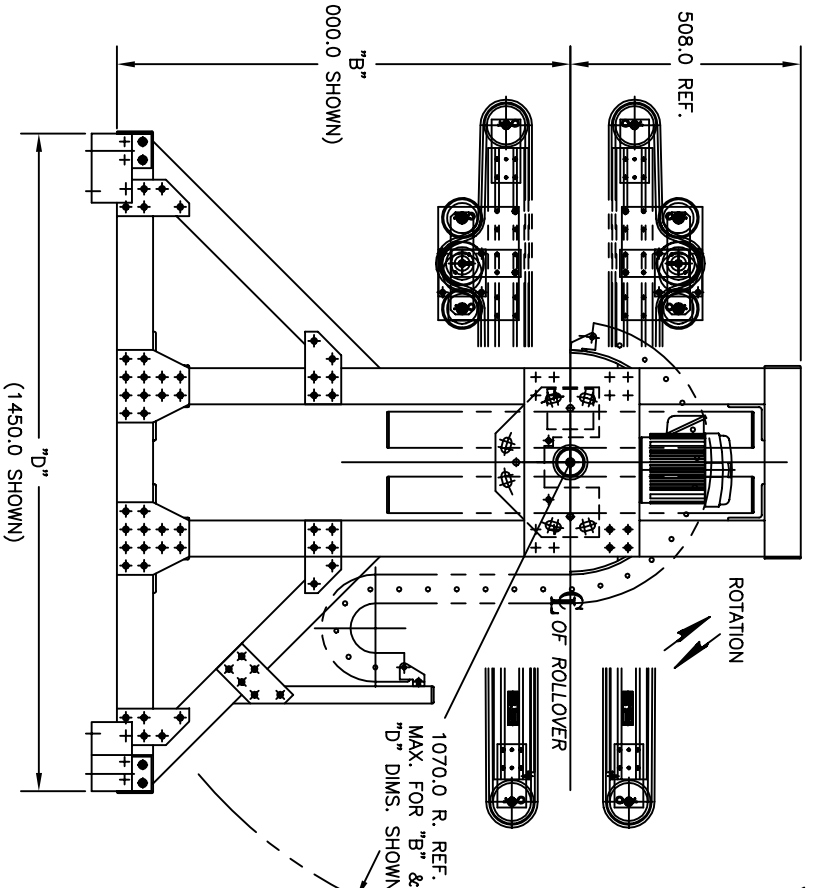
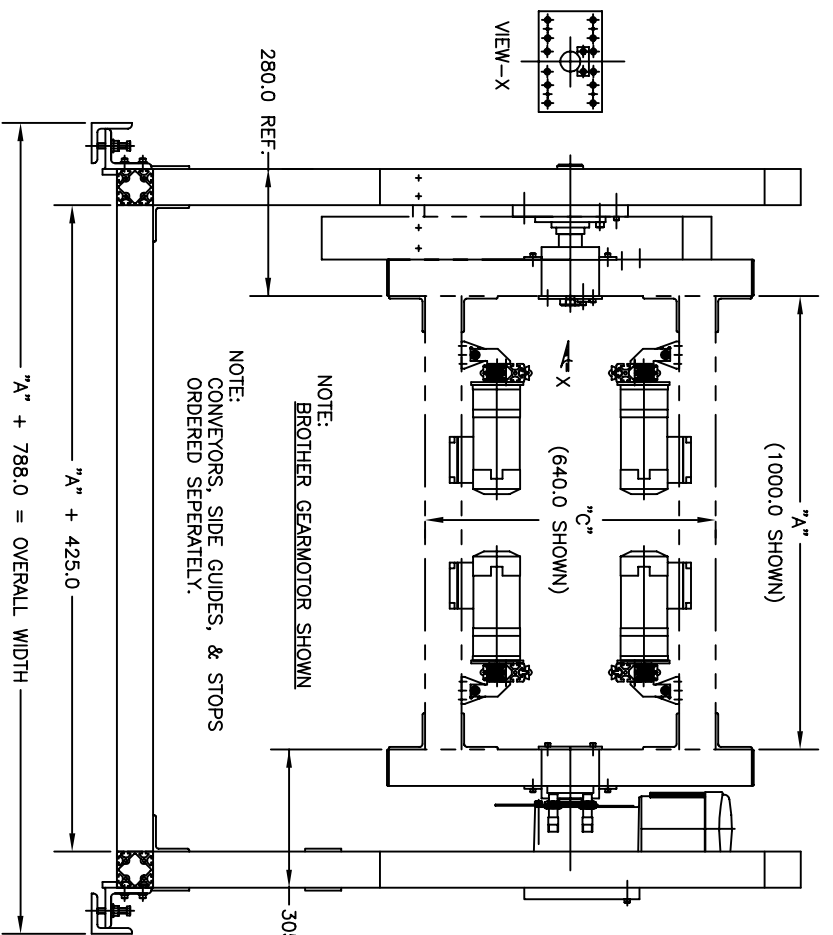
5096 1/2 CANAL ROAD  
 P.O. BOX 37  
 DIMONDALE MICHIGAN 48821  
 PHONE (517) 646-9637  
 FAX (517) 646-8115  
 WWW.DIAMSYS.COM  
 E-MAIL: INFO@DIAMSYS.COM

**DIAMOND AUTOMATION, LTD.**  
 CONTACT CONVEYOR SYSTEMS

TITLE METRIC ROTATE WITH SHOCK PACKAGE & BRAKE ASSEMBLY  
 MODEL #5039

FORM BR/G DATE 5/19/98 SHEET R-4





HOW TO ORDER DIAMOND AUTOMATION ELECTRIC ROLLER

EXAMPLE: [5210] - [BRO] - [1000.0] - [1000.0] - [640.0] - [1450.0] - [0] - [0] - [0]

MODEL NUMBER	IN MM
MOTOR OPTION	IN MM
BRO - BROTHERS	IN MM
INTERNAL FRAME WIDTH "A"	IN MM
FLOOR TO ROLLER CENTERLINE	IN MM
INTERNAL FRAME HEIGHT	IN MM
EXTERNAL FRAME LENGTH	IN MM

R-WITH OPTIONAL ROTATING UNION
O-WITHOUT ROTATING UNION
L-WITH OPTIONAL LOCKING PIN
O-WITHOUT LOCKING PIN
P-WITH OPTIONAL PROX. SWITCHES
O-WITHOUT PROX. SWITCHES

TECHNICAL DATA:  
 TWO MOUNTS ARE REQUIRED FOR EACH CONVEYOR.  
 MAXIMUM UNSUPPORTED LENGTH = 1M  
 MAX LOAD = 50 LBS. PER CONVEYOR  
 WT. OF ROTATING UNIT = 264 LBS.(APPROX.)  
 NOTE: MAX. R. IS DEPENDENT UPON "B" & "D" DIMS.

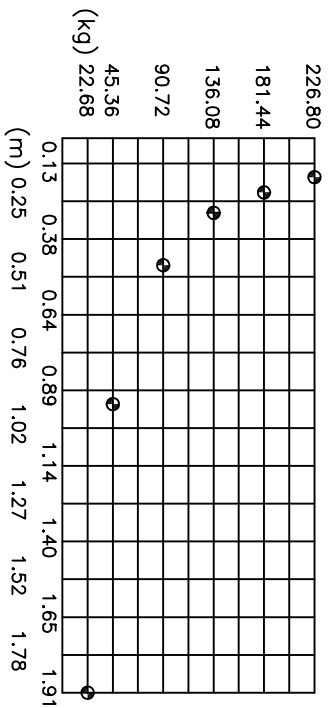
5096 1/2 CANAL ROAD  
 P.O. BOX 37  
 DIMONDALE MICHIGAN 48821  
 PHONE (517) 646-9637  
 FAX (517) 646-8115  
 WWW.DIAMSYS.COM  
 E-MAIL: INFO@DIAMSYS.COM

**DIAMOND AUTOMATION, LTD.**  
**CONTACT CONVEYOR SYSTEMS**

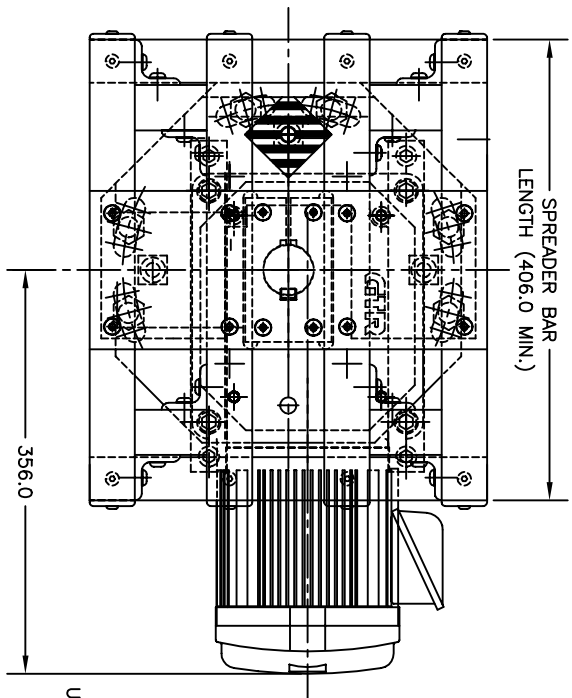
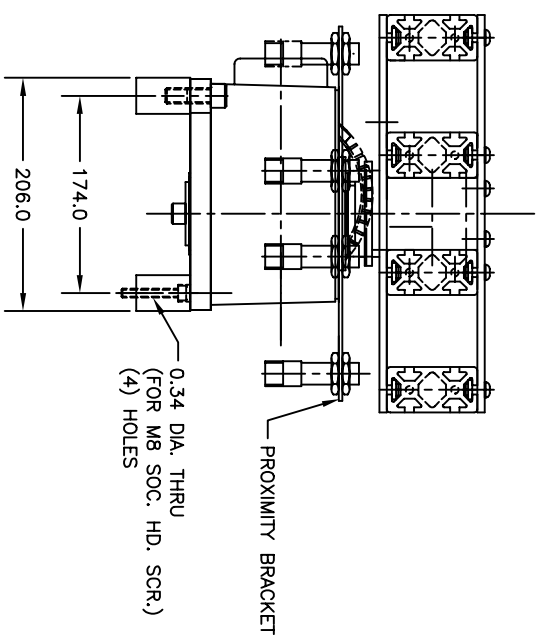
TITLE: METRIC 180° ROLLER  
 MODEL #5210

DRWN BY: RCG DATE: 12/01/98 SHEET: R-2

WEIGHT OF PART AND EQUIPMENT



MAX. DISTANCE FROM CENTER OF MASS OF PART AND EQUIPMENT TO SHAFT TO  
 MAX. AXIAL LOAD = 226.80 kg



HOW TO ORDER DIAMOND AUTOMATION METRIC HEAVY-DUTY ROTATE WITH ELECTRIC MOTOR

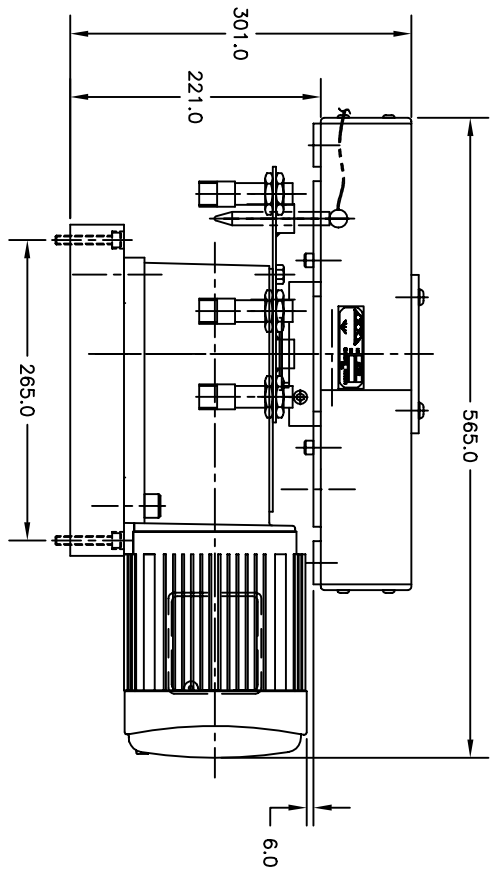
EXAMPLE:  -  -

MODEL NO.  -  -

A = 90° CLOCKWISE  
 B = 90° COUNTER CLOCKWISE  
 C = 180° CLOCKWISE  
 D = 180° COUNTER CLOCKWISE

SPREADER BAR LENGTH (406.0 MIN SHOWN)

USE OF MID-DRIVE CONVEYORS IS RECOMMENDED  
 NOTE: BROTHER GEARMOTOR SHOWN



TECHNICAL DATA:  
 DRIVE MOTOR TORQUE = 394.8 N/m  
 10 DRIVE MOTOR STARTS PER MIN.  
 GEARMOTOR IS 3-PHASE

5096 1/2 CANAL ROAD  
 P.O. BOX 37  
 DIMONDALE MICHIGAN 48821  
 PHONE (517) 646-9637  
 FAX (517) 646-8115  
 WWW.DIAMONTS.COM  
 E-MAIL: INFO@DIAMONTS.COM

**DIAMOND AUTOMATION, LTD.**  
 COMPACT CONVEYOR SYSTEMS

TITLE: METRIC HEAVY-DUTY ROTATE WITH ELECTRIC MOTOR  
 MODEL #5058

DRWING BY: RCG DATE: 5/22/98 SHEET: R-1