

## METRIC SLIDE UNITS

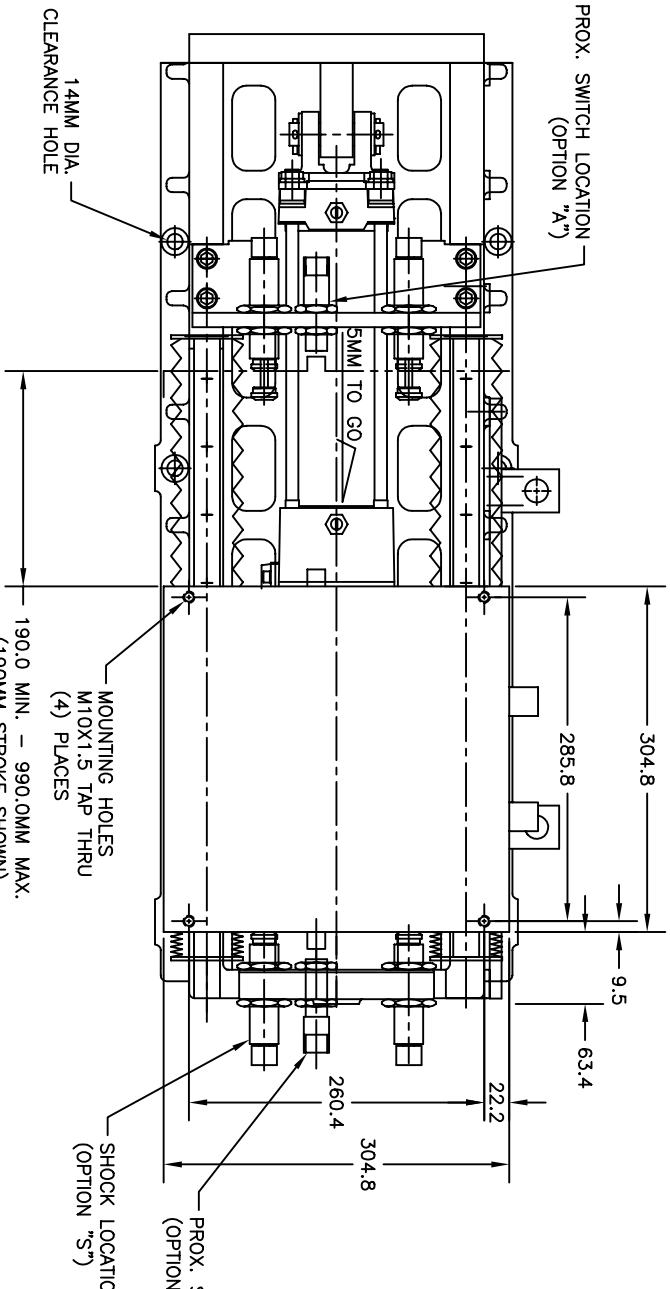
<u>MODEL #</u>	<u>SHEET #</u>	<u>DESCRIPTION</u>
5205 :	S-1 :	STANDARD SLIDE ASSEMBLY
5209 :	S-2 :	STANDARD SLIDE ASSEMBLY WITH HYDRO-CHECK PACKAGE
5239 :	S-3 :	ENDSHIFT WITH CONTAMINATION COVER AND DUAL CARRIAGE
5312 :	S-4 :	ENDSHIFT WITH CONTAMINATION COVER AND SINGLE CARRIAGE

LAST PLOT DATE: 9/17/04

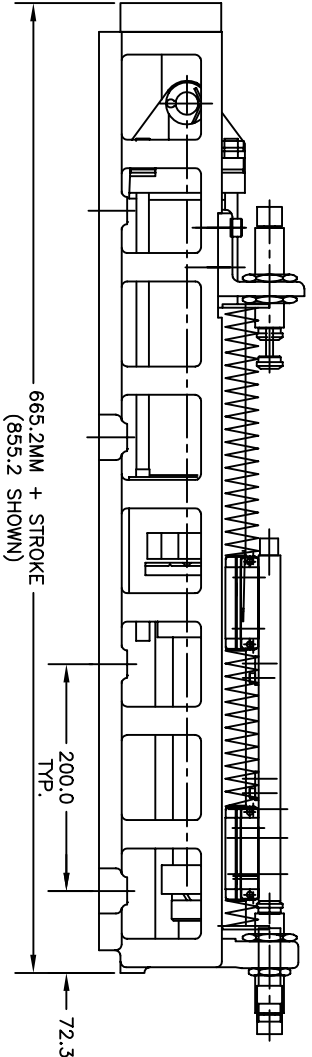
HOW TO ORDER DIAMOND AUTOMATION  
METRIC SLIDES

EXAMPLE: 5205 - AML - 190 - ABK

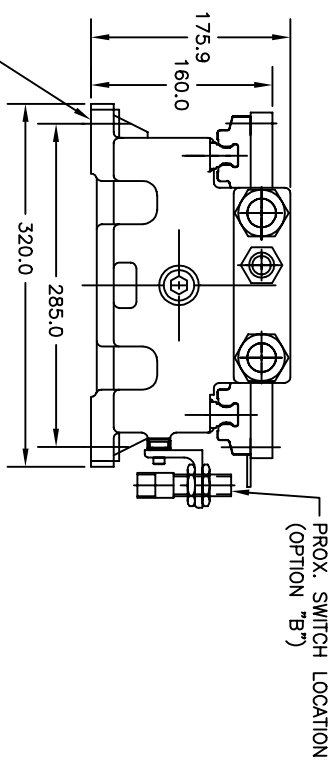
MODEL NUMBER	EXAMPLE: 5205 - AML - 190 - ABK
CYLINDERS:	ISO - ISO AIR AML - AIR METRIC LOCKING HN - HYDRAULIC NFPA AN - AIR NFPA
LENGTH OF STROKE	MM
OPTIONS:	A - PROX. SWITCH LOCATION B - PROX. SWITCH LOCATION F - FLOW CONTROL VALVES K - SHOCKS W - WAY COVERS



190.0 MIN. - 990.0MM MAX.  
(190MM STROKE SHOWN)  
\*\*FRAME IS AVAILABLE  
IN 100MM INCREMENTS.



LIGHT WEIGHT ALUMINUM FRAME



CAPACITY:  
HORIZONTAL WEIGHT = 100.0KG (220.4LBS.)  
AIR CYLINDER SPEED = 300MM/SEC. (11.81"/SEC.)  
DYNAMIC LOAD 300MM OFF SET - 500KG (1110.23LBS.)

FEATURES:  
- CAST ALUMINUM FRAME  
- HEAT TREATED  
- OPEN CONSTRUCTION, FOR  
EASY HOOK-UP AND MAINTENANCE.

5096 1/2 CANAL ROAD  
P.O. BOX 37  
DIMONDALE MICHIGAN 48821  
PHONE (517) 646-9637  
FAX (517) 646-8115  
WWW.DIAMSTS.COM  
E-MAIL: INFO@DIAMSTS.COM



DIAMOND COMPACT CONVEYOR SYSTEMS  
TITLE: METRIC SINGLE CYLINDER SLIDE  
MODEL #5205

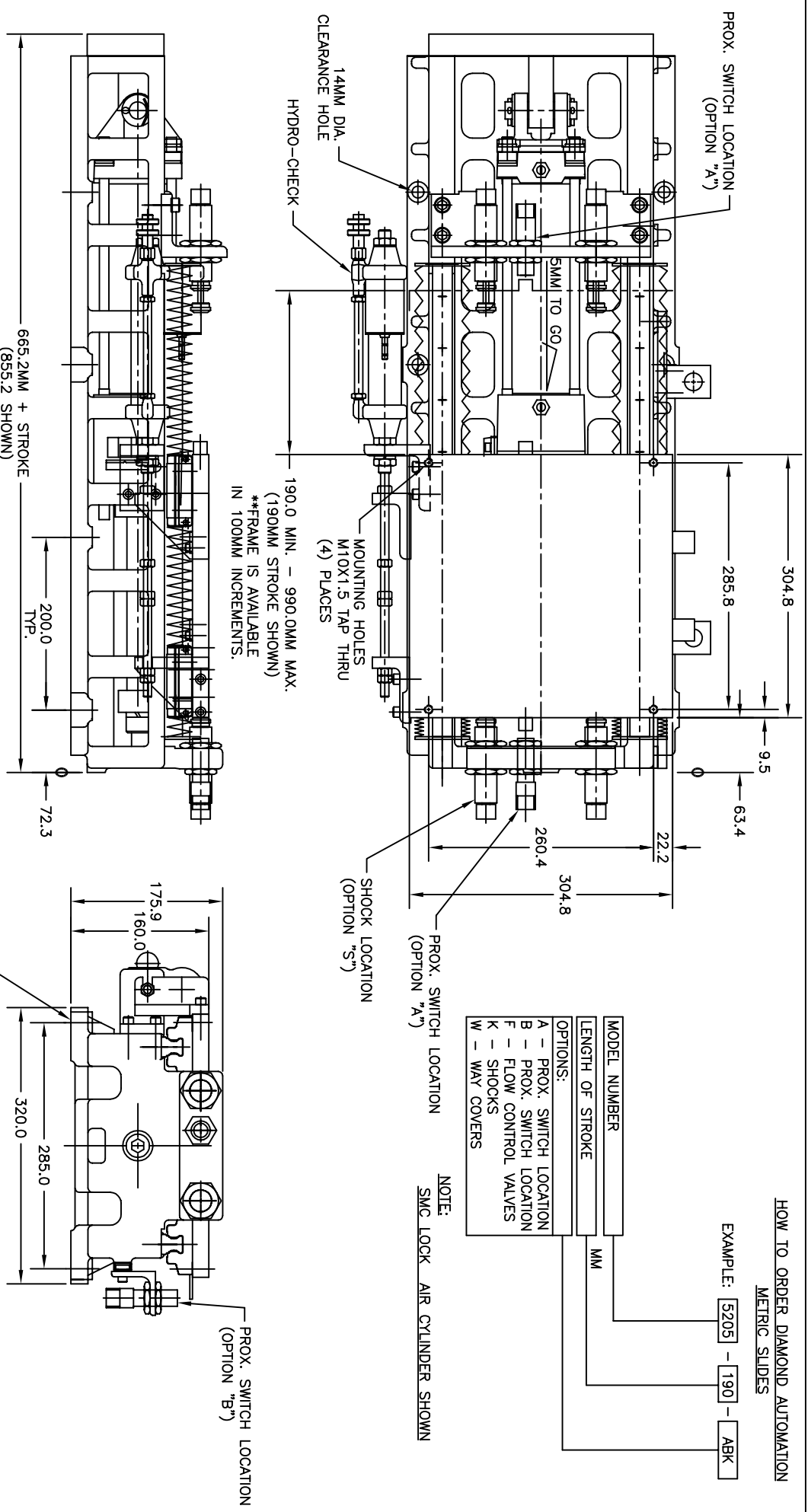
99MM BR A/F [REV 12/28/98] SHEET S-1

HOW TO ORDER DIAMOND AUTOMATION  
METRIC SLIDES

EXAMPLE: [5205] - [190] - [ABK]

MODEL NUMBER	MM
LENGTH OF STROKE	MM
OPTIONS:	
A - PROX. SWITCH LOCATION	
B - PROX. SWITCH LOCATION	
F - FLOW CONTROL VALVES	
K - SHOCKS	
W - WAY COVERS	

NOTE:  
SMC LOCK AIR CYLINDER SHOWN



CAPACITY:  
HORIZONTAL WEIGHT = 100.0KG (220.4LBS.)  
AIR CYLINDER SPEED = 300MM/SEC. (11.81"/SEC.)  
DYNAMIC LOAD 300MM OFF SET - 500KG (1110.23LBS.)

FEATURES:  
- CAST ALUMINUM FRAME  
- HEAT TREATED  
- OPEN CONSTRUCTION, FOR EASY HOOK-UP AND MAINTENANCE.

5096 1/2 CANAL ROAD  
P.O. BOX 37  
DIMONDALE MICHIGAN 48821  
PHONE (517) 646-9637  
FAX (517) 646-8115  
WWW.DIAMSYS.COM  
E-MAIL: INFO@DIAMSYS.COM

**DIAMOND AUTOMATION, LTD.**  
CONTACT CONVERTOR SYSTEMS

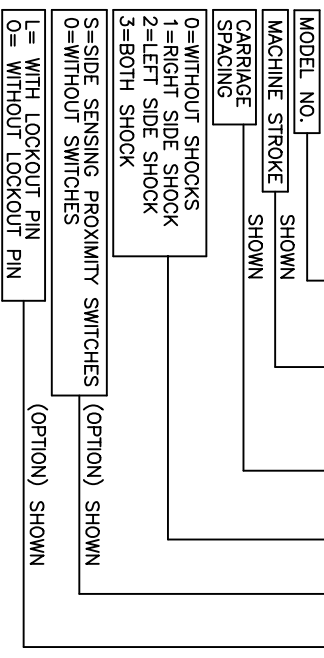
TITLE: METRIC SINGLE CYLINDER SLIDE WITH HYDRO-CHECK  
MODEL #5209

DESIGNED BY: A.F. DATE: 2/15/99 SHEET: S-2

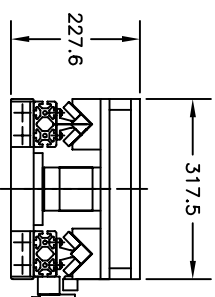
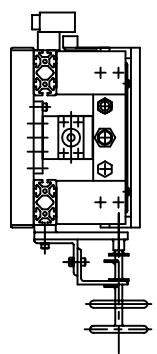
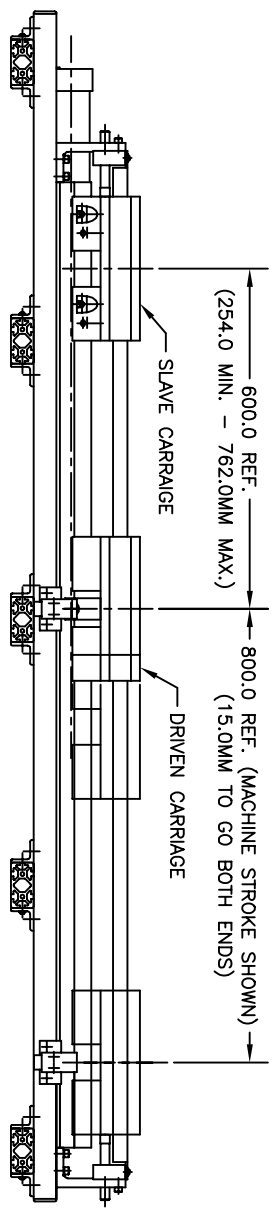
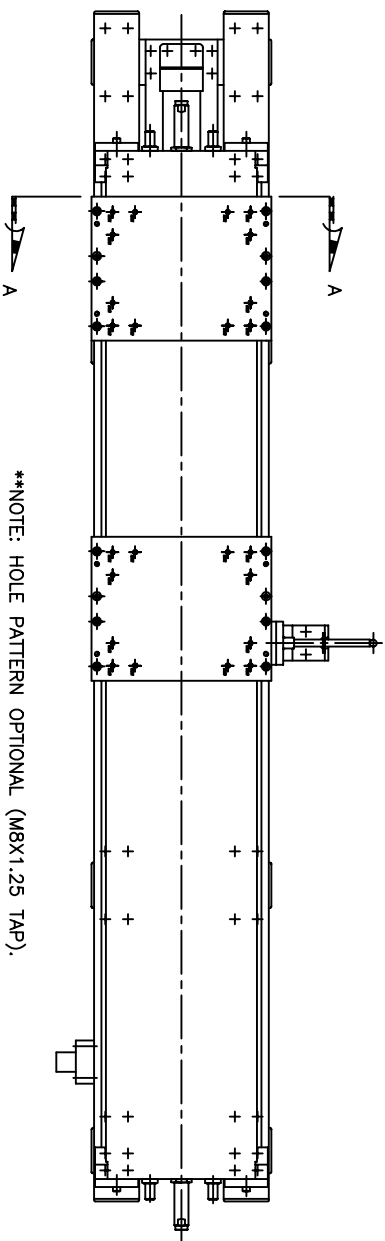
LAST PRINT DATE: 01/04/06

HOW TO ORDER DIAMOND AUTOMATION  
DUEL CARRIAGE ENDSHIFT ASSEMBLY

EXAMPLE: 5239 - 800.0 - 600.0 - 3 - S - L



\*\*NOTE: HOLE PATTERN OPTIONAL (M8X1.25 TAP).  
CUSTOMER TO SUPPLY OR USE THE ONE SHOWN



NOTE:  
PARKER ISO 63MM BORE AIR CYLINDER

5096 1/2 CANAL ROAD  
P.O. BOX 37  
DIMONDALE MICHIGAN 48821  
PHONE (517) 646-9637  
FAX (517) 646-8115  
WWW.DIAMSTS.COM  
E-MAIL: INFO@DIAMSTS.COM

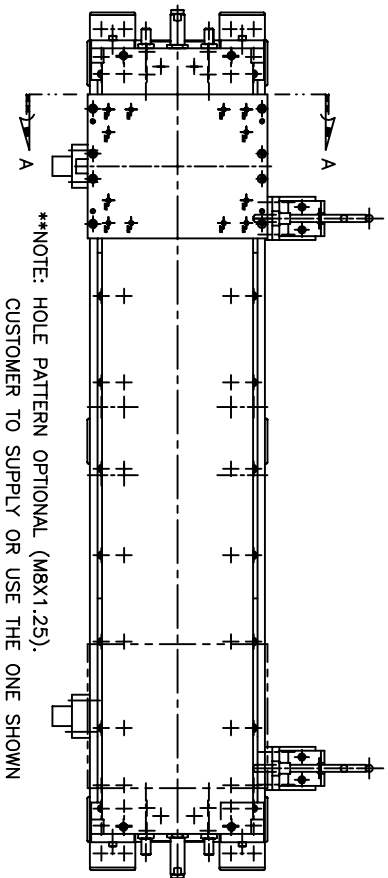
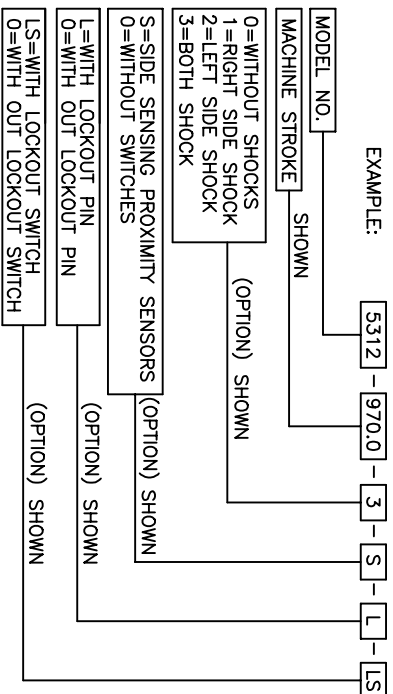
**DIAMOND AUTOMATION, LTD.**  
COMPACT CONVEYOR SYSTEMS

METRIC ENDSHIFT WITH  
CONTAMINATION COVER  
MODEL #5239

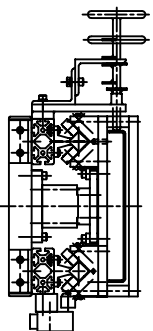
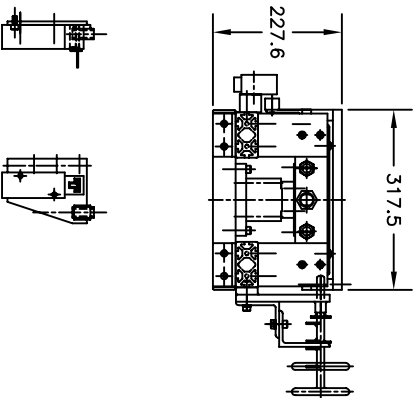
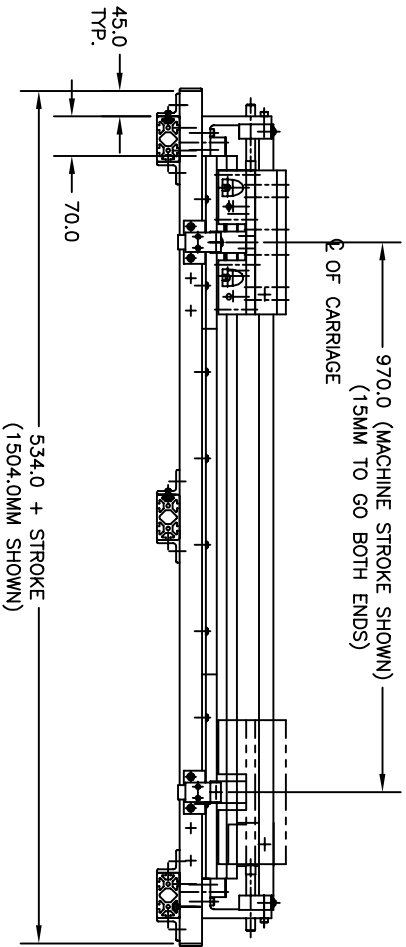
DRWING BY MJB/REV05/10/00 SHEET S-3

HOW TO ORDER DIAMOND AUTOMATION  
SINGLE CARRIAGE ENDSHIFT ASSEMBLY

EXAMPLE:



\*\*NOTE: HOLE PATTERN OPTIONAL (M8X1.25).  
CUSTOMER TO SUPPLY OR USE THE ONE SHOWN



SECTION A~A

SAFETY LOCKOUT SWITCH ~ OPTIONAL  
NOTE: REMOTE MOUNT SWITCH  
OUTSIDE OF MACHINE GUARDING.

5096 1/2 CANAL ROAD  
P.O. BOX 37  
DIMONDALE MICHIGAN 48821  
PHONE (517) 646-9637  
FAX (517) 646-8115  
WWW.DIAMSYS.COM  
E-MAIL: INFO@DIAMSYS.COM

**DIAMOND AUTOMATION, LTD.**  
CONTACT CONVEYOR SYSTEMS

TITLE METRIC ENDSHIFT W/ SINGLE CARRIAGE,  
RODLESS CYLINDER & CONTAMINATION COVER  
MODEL #5312

DRAWN BY R/G DATE 1/22/03 SHEET S-4